

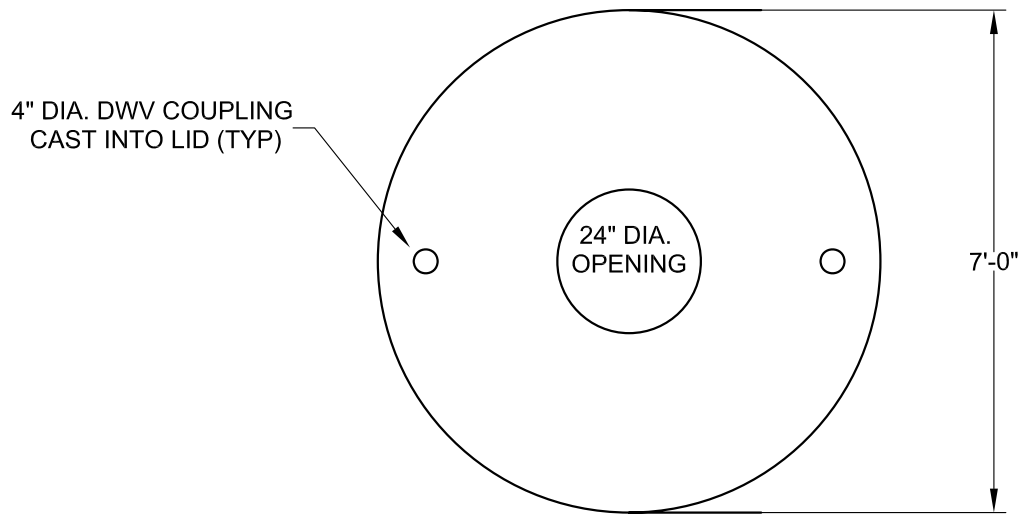
84" DIAMETER REPAIR LID

SPECIFICATIONS/MODERN PRECAST CONCRETE STANDARDS:

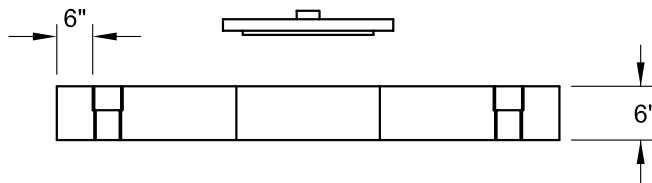
- CONCRETE STRENGTH: 4000 PSI MIN. @ 28 DAYS
- REINFORCING CONFORMS TO ASTM A615 & A185
- DESIGN: MAXIMUM EARTH COVER IS 4'-0"; NO TRAFFIC LOADS
- APPROXIMATE WEIGHT - 1.32 TONS



Environmental & Wastewater Division



PLAN VIEW



PROFILE VIEW



Modern ... Concrete Solutions

Modern Precast Concrete
Corporate Headquarters | 210 Durham Road, PO Box 339 | Ottsville, PA 18942
(610) 847-5112 | F (610) 847-1046 | www.modcon.com