

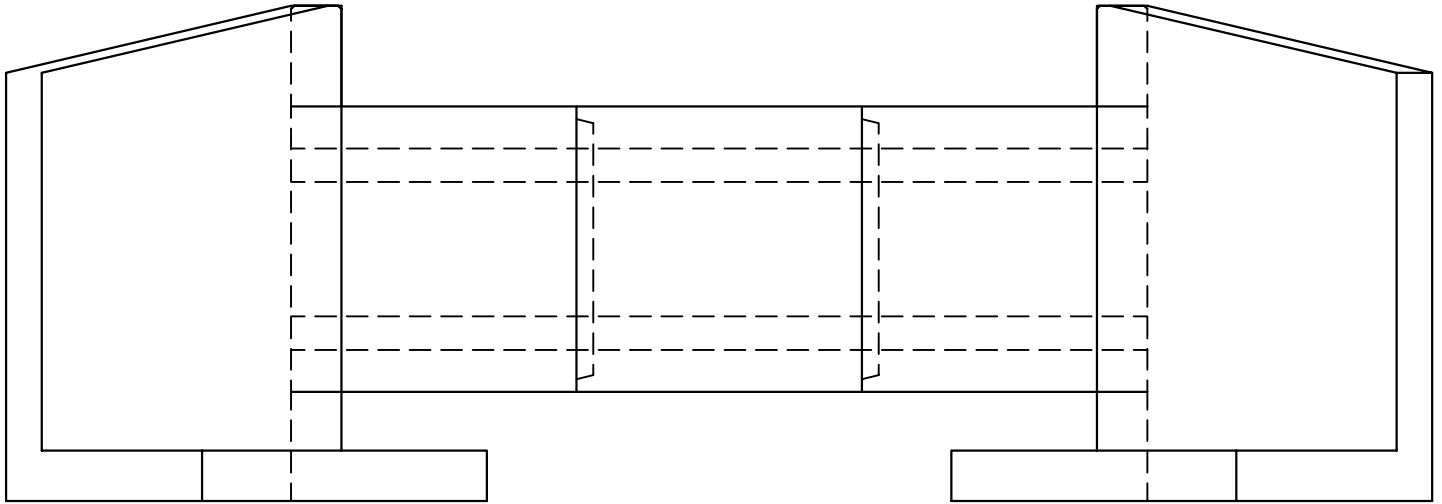
# BOX CULVERT

## SPECIFICATIONS/MODERN PRECAST CONCRETE STANDARDS:

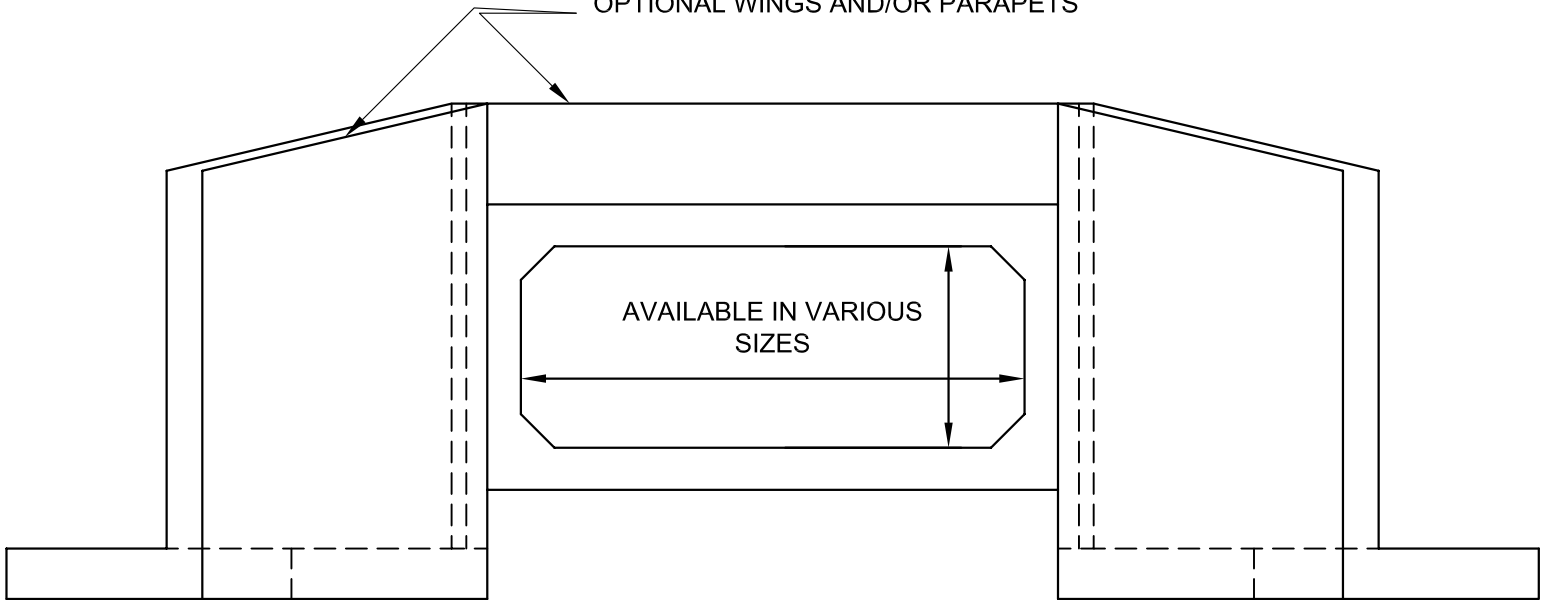
- CONCRETE STRENGTH: 5000 PSI MIN @ 28 DAYS
- REINFORCEMENT: CONFORMS TO ASTM A615 & A185
- JOINT SEALANT: FLEXIBLE NEOPRENE GASKET



**SITE & HIGHWAY DIVISION**



OPTIONAL WINGS AND/OR PARAPETS



## OTHER OPTIONS:

- POST-TENSIONING
- OPEN-BOTTOM
- SKEWED ENDS



## **Modern ... Concrete Solutions**

Modern Precast Concrete  
Corporate Headquarters | 210 Durham Road, PO Box 339 | Ottsville, PA 18942  
(610) 847-5112 | F (610) 847-1046 | [www.modcon.com](http://www.modcon.com)