



## Modern Achieves Top Quality "Award of Excellence"

We are very proud to announce that on January 29, 2011, Modern Precast's Easton plant was presented with an Award of Excellence at the National Precast Concrete Association's Salute to Excellence awards banquet held at the NASCAR Hall of Fame in Charlotte, NC. We were presented with one of the top three awards out of nearly 400 certified plants. That signifies the top 1% of all certified plants. This is the second time Modern Easton has been in the top three since winning the honor in 2006.

I was proud to present the plaque to Terry Fretz the quality control manager of Easton, during a 300 day celebration luncheon for no lost work days in our Ottsville plant.

The first time we attained this award it was quite an honor but to win it a second time four years later, with even a higher score, that's an unbelievable achievement. Terry, his team and the entire crew did an astonishing job — thank you and congratulations!

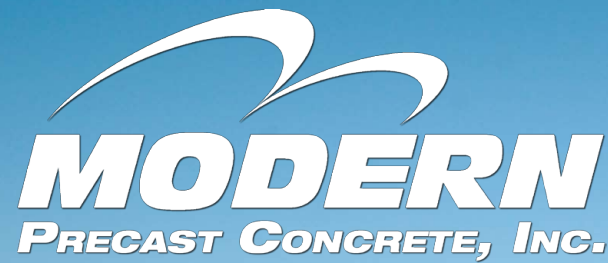
Vernon C. Wehrung  
President/CEO



Brad Jacobs, General Manager  
congratulating Terry Fretz, QC Manager



Andy Weiser (l) Chairman, NPCA  
Certification Committee presenting award  
to Vernon Wehrung, President, Modern  
Precast Concrete, Inc.



210 Durham Rd., Ottsville, PA 18942 | 610.847.5112  
3900 Glover Rd., Easton, PA 18040 | 484.548.6200

www.modcon.com

"To be known as a  
respectable company."

## 65TH ANNIVERSARY — MARCH 15, 2011

My Dad believed that "a picture is worth a thousand words," so we've included a few in this newsletter that I hope you enjoy. They are reflective of Modern's beginnings back in 1946.

And what better way to explain Modern's history than to have one of the founders tell you about it; so I asked my Mom to write a little something.

### Congratulations "MODERN" on your 65th Anniversary.

In 1947 we erected a Quonset Hut, our first manufacturing plant. We mixed our concrete in a small barrel hand mixer... throwing shovels full of sand, stone, cement and water. This was no computerized batching system.

All the accounting (bills, etc.) was done by hand...either hand-written or using the good old-fashioned typewriter. No computers available at this time.

Life is constantly changing. Keeping your eyes open to possibilities changes your entire perspective.

Our quality precast concrete products have grown immensely over these 65 years.

Commitment to our Mission Statement is a driving force behind our success. May the Lord continue our growth and success for many more years to come.

God's Blessings!  
Lovingly,

Blanche Wehrung

Modern Precast Concrete — American owned since 1946.

3900 Glover Rd., Easton, PA 18040



### BUILDINGS DIVISION

Office: 610-997-3119 • Fax: 610-258-8165

**Steve Grischott** 484-548-6502 sgrischott@modcon.com  
Sales Representative

**Tom Ely** 484-548-6211 tely@modcon.com  
Sales/Project Coordinator

**Matt Truett** 484-548-6231 mtruett@modcon.com  
Project Coordinator

### CONSTRUCTION SUPPLIES & ENVIRONMENTAL WASTEWATER DIVISION

Office: 610-847-7203 • Estimating Fax: 610-847-1046

**Jim Bishop** 610-847-7222 jbishop@modcon.com  
Pump & Service Manager

**Andrea Doucette** 610-847-7224 adoucette@modcon.com  
Sales/Estimating Supervisor

**Tom Sorber** 484-548-6218 tsorber@modcon.com  
Estimator

**Nate King** 610-847-7236 nking@modcon.com  
Sales & Purchasing

**Ray Knight** 610-847-7215 lrknight@modcon.com  
Sales & Customer Service Manager, Dispatch

### OPERATIONS

Office: 484-548-6200 • Fax: 610-258-8165

**Brad Jacobs** 484-548-6209 bjacobs@modcon.com  
General Manager, Ottsville & Easton

**Susie Magalhaes** 484-548-6560 smagalhaes@modcon.com  
Easton Administrative Assistant

### SITE & HIGHWAY PRODUCTS DIVISION

Office: 484-548-6200 • Fax: 610-258-8165

**John Carp** 484-548-6227 jcarp@modcon.com  
Sales Representative

**Bill Fogel** 484-548-6212 bfogel@modcon.com  
Sales Representative

**Jon Limbert** 484-548-6238 jlimbert@modcon.com  
Sales Representative

**Chris Pio** 484-548-6236 cpio@modcon.com  
Sales Representative

**Jason Koder** 484-548-6215 jkoder@modcon.com  
Inside Sales

**Greg Olson** 484-548-6216 golson@modcon.com  
Estimating & Projects Manager

**Tom Sorber** 484-548-6218 tsorber@modcon.com  
Estimator

**Russ Beatty** 484-548-6241 rbeatty@modcon.com  
Estimator

**Joe Baranak** 484-548-6219 jbaranak@modcon.com  
Estimator

**Tom Titone** 484-548-6220 ttitone@modcon.com  
Structural Engineer/Projects Manager

**Steve Verba** 484-548-6503 sverba@modcon.com  
Project Coordinator/Estimator

**Nelson Fonseca** 484-548-6232 nfonseca@modcon.com  
Project Coordinator

**Stan Schmidt** 484-548-6217 sschmidt@modcon.com  
Project Coordinator

**Michael Magalhaes** 484-548-6235 mmagalhaes@modcon.com  
Production Scheduler Manager

**Dave Weber** 484-548-6223 dweber@modcon.com  
Dispatch

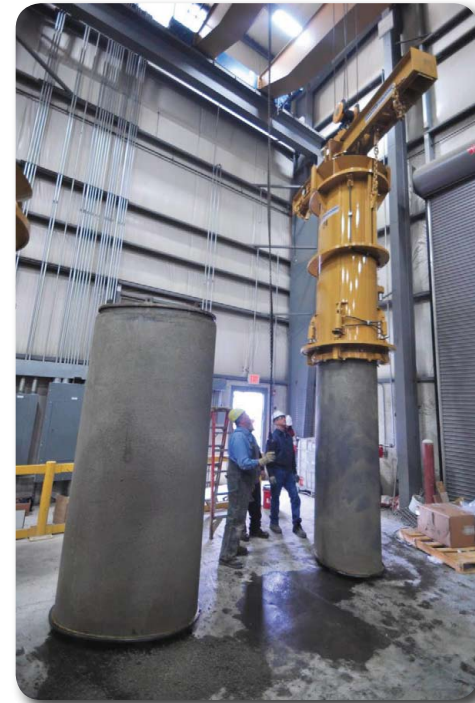


### ••••➤ ELLIPTICAL PIPE

We are extremely excited to announce that Modern Precast is **NOW MANUFACTURING** the most common sizes of elliptical pipe; 18", 24" and 30" equivalent.

And aligned with our original and on-going goal of providing the VERY BEST RCP in the market, we have chosen a "Single Off-Set Joint." This design allows the specifier and/or user to choose between a gasketed, butyl or mortar joint. The gaskets are pre-lubed and provide the most efficient installation in the field.

As always, we can provide all sizes needed for your job whether round or elliptical, along with flared ends, fittings or most any other concrete pipe components required.



### ••••➤ BUNDLING

"Precast structures and concrete pipe go together like a hand and glove." Sounds like a song, doesn't it? Well, it can be a tune that you carry all the way to the bank. Modern is the **ONLY** manufacturer in the Tri-State area that produces both RCP and Precast and we're willing to share that advantage with you.

Now you can benefit from a Single-Source Supplier by saving both valuable time and money. Please don't forget your construction supplies also — whether it's plastic pipe, geo-textiles, frames and covers, pumps or most anything else required on the job — we have it and will be pleased to include that also.

210 Durham Rd., Ottsville, PA 18942 | **610.847.5112**  
3900 Glover Rd., Easton, PA 18040 | **484.548.6200**

[www.modcon.com](http://www.modcon.com)

### ••••➤ RETAINING WALLS

Retaining Walls are one of those products that generate a "love/hate" relationship. Specifiers love to design them because they're not only a source of "billing" but are creative and fun. But, it's also a huge responsibility and if the walls should fail, then the love quickly turns to hate.

Contractors are in the same kind of boat. It's nice to "show off" your skills and put something above ground instead of just below where it's hidden. It's also a significant source of revenue but unless you are experienced and have knowledgeable partners (engineer, precaster, etc.), it too can become "your worst nightmare."

Precasters also "have a dog in this fight." Walls add to our product line, are aesthetic and provide a solution to a problem. There again, it's critical to have the proper partners in design and installation or the beauty of the projects end quickly.

Lastly, we have the owners who don't want to spend the money for a retaining wall but realize that it's either the only solution to a puzzle or gains them valuable space. And with property values so high, it's often an easy economical decision. However, the last thing they ever need to experience is a failure.

Modern has decades of experience with retaining walls. We have separated the "chaff" when it comes to which products to make and what engineers to work with. The following are some of the walls that we will be happy to review with you, depending on your needs.

- ReCon is a gravity and grid wall that under the proper conditions can retain up to 20 ft. of earth without Geo-Fabric. It has a beautiful "granite face" and is produced under the same high quality standards as all of our precast products.
- Lagging Walls are precast concrete panels that fit into an H-Beam which is embedded into the earth. This is often the most economical or sole solution to a retaining wall requirement and Modern has done miles of these types of walls.
- L-Walls are a simple design that provides a solution to walls that are not very high. They are simple to design, manufacture and install and can be the preferred solution.
- T-Wall is a well proven engineered system that provides a huge cost advantage under many situations. Modern manufactures this product for the Neel Company who is the inventor and engineering company. We will be pleased to put you in contact with them directly.
- If small block is mandated or desired for some reason, we will be pleased to have our Sister Company, Wehrung's Lumber & Home Center, contact you. They distribute for two manufacturers and sell tens of thousands of surface square feet a year.



Modern's First Tank Truck was a 1939 Ford — purchased in 1952.

